

# MONTHLY MEMBERSHIP PROGRESS REPORT

LOCATION INDIA

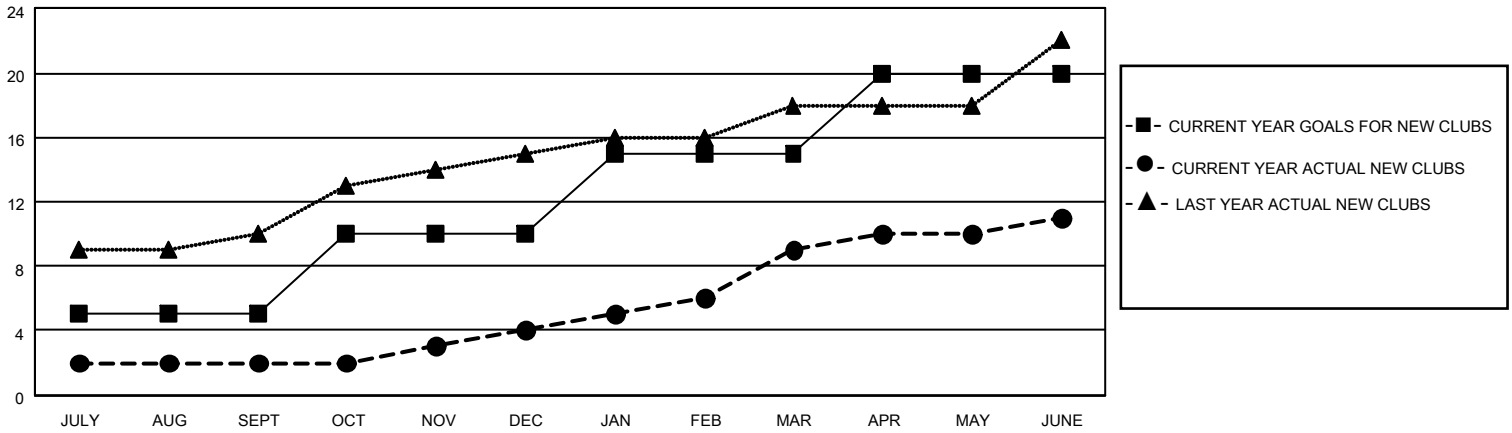
District 324 C

Results as of: 6/30/2023

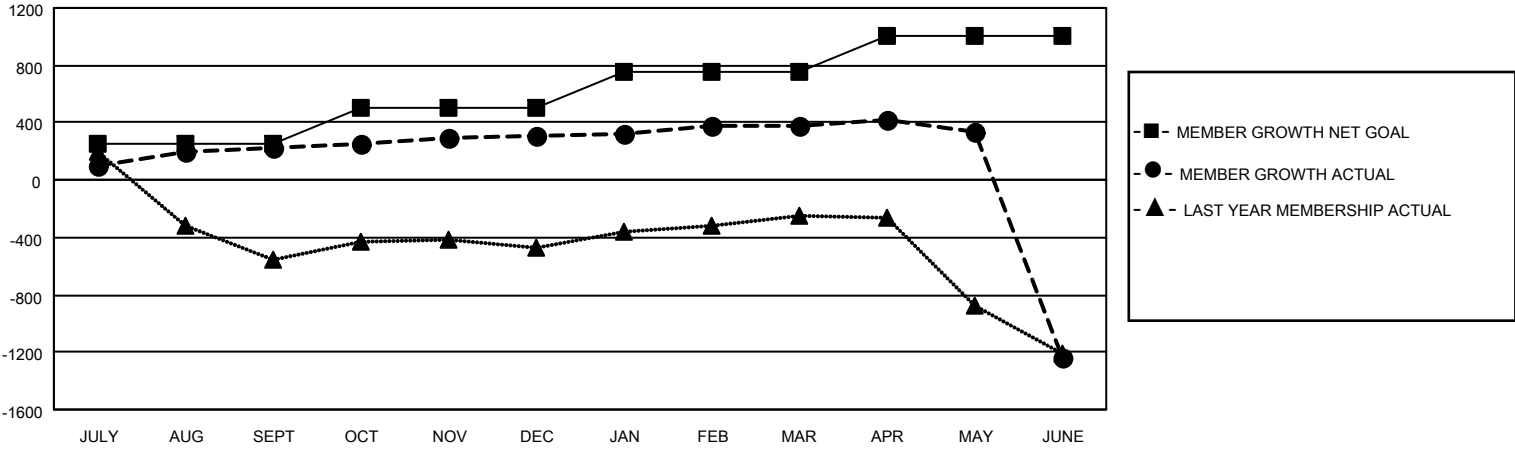
Clubs			
RESULTS FOR 2022-2023			
QUARTER	NEW CLUB GOAL	NEW CLUBS	DROPPED CLUBS
JULY/AUG/SEPT	5	2	0
OCT/NOV/DEC	5	2	3
JAN/FEB/MAR	5	5	4
APR/MAY/JUNE	5	2	4

Members			
RESULTS FOR 2022-2023			
QUARTER	MEMBER GROWTH NET GOAL	MEMBER GROWTH ACTUAL	DROPPED MEMBERS ACTUAL (including transfers)
JULY/AUG/SEPT	250	457	96
OCT/NOV/DEC	250	495	146
JAN/FEB/MAR	250	416	197
APR/MAY/JUNE	250	366	1,857

**GOALS AND ACTUAL NEW CLUBS CUMULATIVE**



**GOALS AND ACTUAL MEMBERS CUMULATIVE**



**DROPPED CLUBS: 11**

**109 CLUBS OF 137 ADDED 1 OR MORE NEW MEMBERS**

**GENDER DISTRIBUTION**

MALE	4,394 (70.47%)
FEMALE	1,841 (29.53%)
NON BINARY	0 (0.00%)
PREFER NOT TO ANSWER	0 (0.00%)

**DROPPED MEMBERS**

DECEASED	27
CLUB CANCELLED	307
OTHER	1,962
<b>TOTAL</b>	<b>2,296</b>

[CLICK HERE FOR CUMULATIVE MEMBERSHIP DATA](#)

TOTAL FAMILY UNIT MEMBERS 2,806

FAMILY MEMBERS PAYING HALF DUES 1,614